

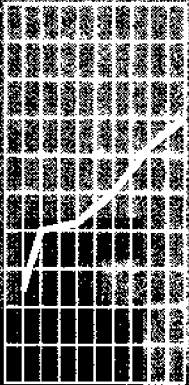


October 1997

EMBARGO: 11:30 AM (CANBERRA TIME) MON 20 OCT 1997

Business Indicators

Australian Capital Territory



Statistics ■

NOTES

FORTHCOMING ISSUES

<i>ISSUE</i>	<i>RELEASE DATE</i>
November 1997	17 November 1997
December 1997	22 December 1997

SYMBOLS AND OTHER USAGES

ACT	Australian Capital Territory
n.a.	not available
n.p.	not available for publication
p	preliminary
*	Represents data with a standard error of greater than 25%. Caution should be exercised when using this data.
—	nil or rounded to zero

INQUIRIES

For further information about statistics in this publication and the availability of related unpublished statistics, contact Kingsley Green on Canberra (02) 6207 0286 or any ABS State office.

For information about other ABS statistics and services, please refer to the back of this publication.

Dalma Jacobs
Regional Director

SUMMARY OF FINDINGS

UPDATED SERIES

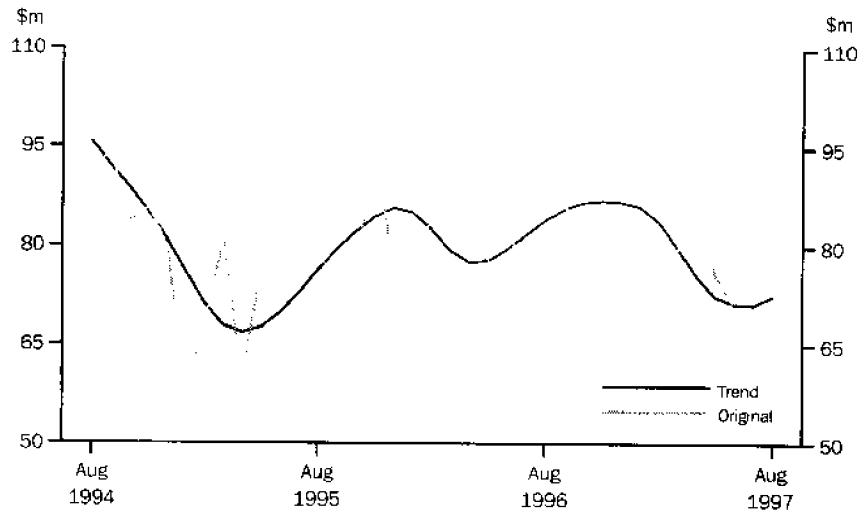
Series updated since the September 1997 issue are: population; labour force; state accounts; industrial disputes; housing finance; building approvals; retail turnover; new motor vehicle registrations; job vacancies; tourist accommodation and business expectations. There is a feature article on wage and salary earners (March Qtr 1997) on pages 7, 8 and 9.

NOTABLE MOVEMENTS

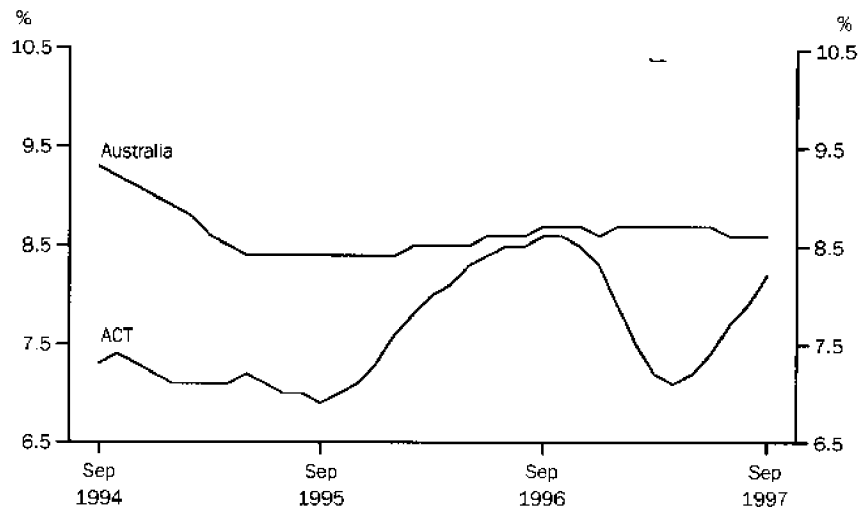
- Population** The estimated resident population of the ACT at 31 March 1997 was 310,100, an increase of 1,600 since the December quarter 1996 and an increase of 3,200 since 31 March 1996. The growth rate for the year to March 1997 was 1.0%, which is slightly above the 0.9% growth rate for the preceding year. Nationally, the estimated resident population increased by 1.3% over the year to 31 March 1997.
- State accounts** Trend Gross state product at average 1989-90 prices for the ACT increased by 0.4% in the June quarter 1997 to \$2.151 million. Quarterly trend growth in the ACT economy remains below the national average of 0.7%. The trend State final demand at average 1989-90 prices increased by 1.3% to \$2,862 from the previous quarter. Private Final Consumption Expenditure recorded a 0.8% increase and Private Gross Fixed Capital Expenditure showed no growth over the quarter (at average 1989-90 prices).
- Labour force** Trend employment decreased marginally (down 0.3% to 157,300 persons) in September 1997 with the ACT recording its third consecutive month of decline. The continued increase in the trend unemployment rate (8.2% in September) was a result of falling numbers of people in part-time employment. The trend participation rate has remained steady at 73.0% since July, following seven consecutive months of increase. Nationally, trend employment increased marginally 0.1% in September, while the unemployment rate remained at 8.6%.
- Industrial disputes** In June 1997, there were 95 working days lost per 1,000 employees in the ACT compared to 89 days lost per thousand in Australia. This represented a 22.1% decrease for the ACT and a 14.4% decrease for Australia from the previous month's figure.
- Housing finance** The trend number of dwelling units financed (includes refinancing) in the ACT during August 1997 increased to 683 dwellings, a rise of 1.6%. The trend estimate for the value of commitments in the ACT was \$72.6 million, an increase of 2.0% on the previous month. Refinancing of existing dwellings comprised 23.4% of the total number of new dwelling units financed in August 1997, which was up 2.6 percentage points on the previous month.

SELECTED BUSINESS INDICATORS

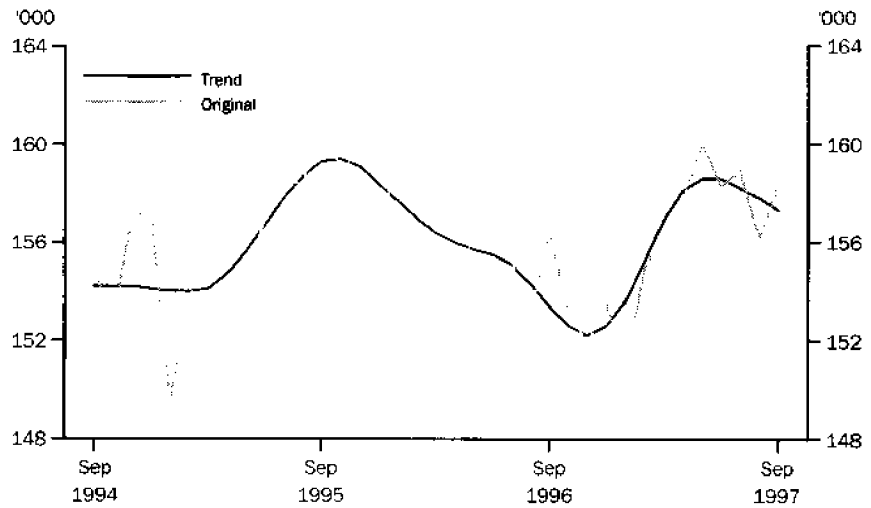
HOUSING FINANCE COMMITMENTS



LABOUR FORCE — TREND UNEMPLOYMENT RATE

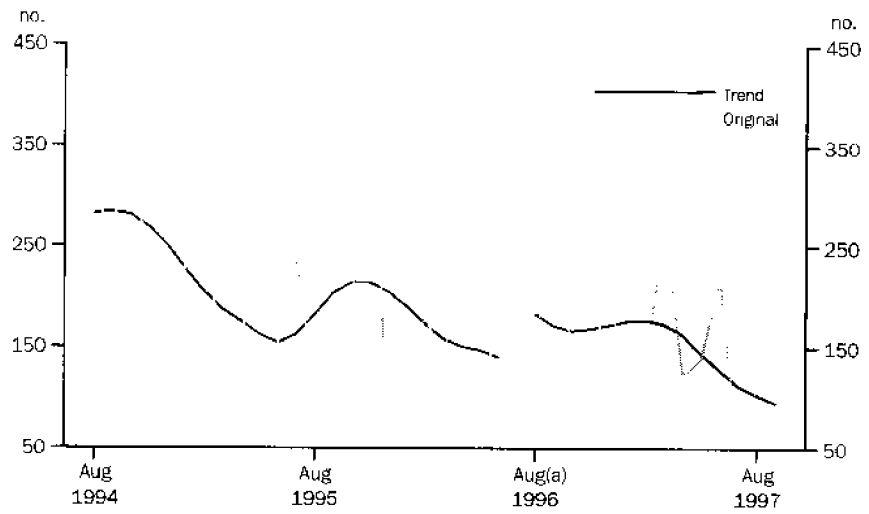


LABOUR FORCE — EMPLOYMENT



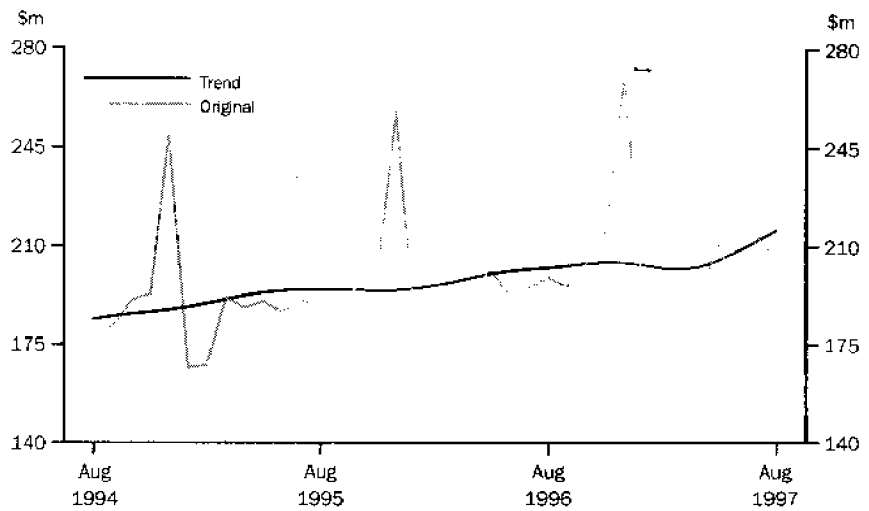
SELECTED BUSINESS INDICATORS *continued*

BUILDING APPROVAL —
DWELLING UNITS APPROVED

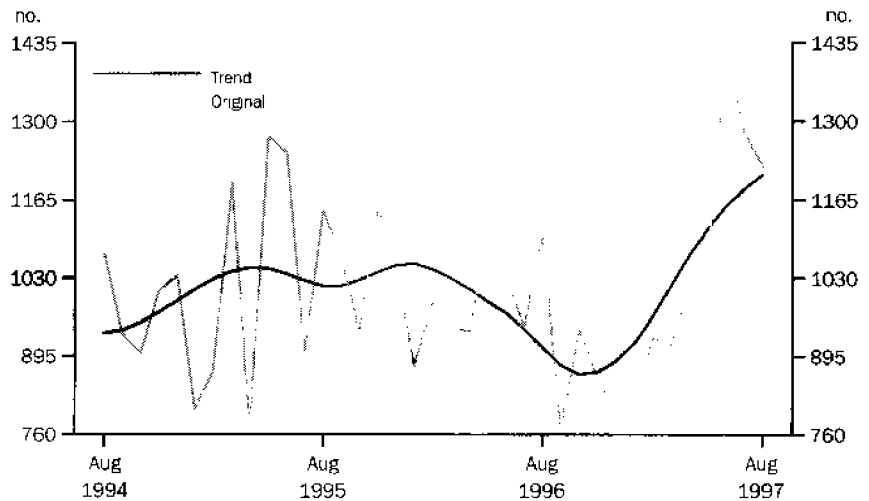


(a) For the period July to December 1996, 165 dwelling units and total building work of \$40.5 million (16%) had been incorrectly omitted from data reported to ABS. All series for the ACT have been revised from July 1996. As further information is received and analysed, the series prior to that are likely to be revised. A trend break has been included in the graph.

RETAIL TURNOVER



NEW MOTOR VEHICLE
REGISTRATIONS



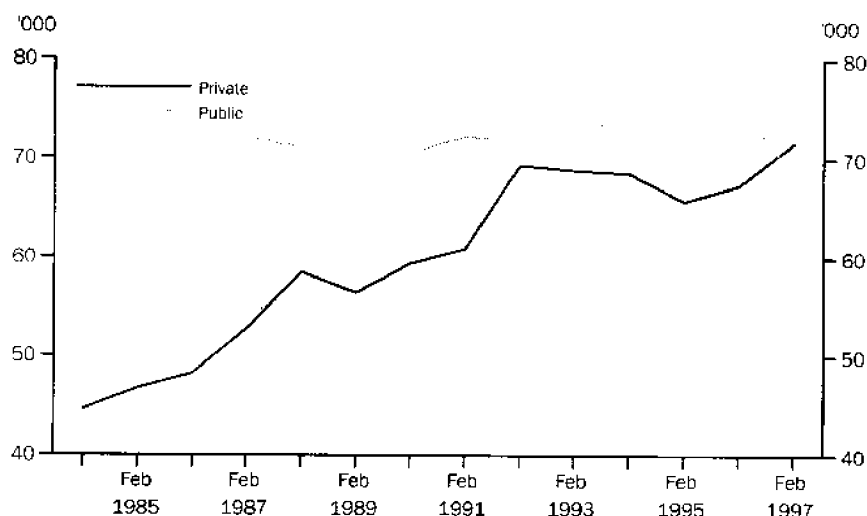
In February 1997 there were 140,000 persons employed in **Government agencies and businesses located in the ACT**. These figures are derived from an employer-based survey and differ from those in the labour force survey reported by **households located in the ACT**. The trend number of wage and salary earners in the ACT increased by 3,500 (up 2.6%) from the previous quarter, despite a fall of 2,600 (down 1.8%) from February 1996. Nationally, the trend number of wage and salary earners decreased by 0.2% since November 1996 but increased by 0.7% from February 1996.

The trend number of wage and salary earners employed in the private sector in the ACT surpassed that of the public sector for the first time in February 1997. The number of wage and salary earners in the private sector grew from 66,600 in November 1996 to 71,600 in February 1997, representing an increase of 7.5% over the February quarter, and 6.4% over the previous year. Conversely, the number of wage and salary earners employed in the public sector fell from 69,900 in November 1996 to 68,400 in February 1997, representing a decrease of 2.1% over the February quarter, and 9.2% over the previous year.

The trend number of wage and salary earners in the ACT public sector has fallen in each of the last four consecutive quarters (down 9.2%). Nationally, the trend number of wage and salary earners in the public sector has fallen for the last five consecutive quarters (down 5.4% to 1,480,600).

In the private sector the trend number of wage and salary earners grew steadily to a peak of 69,300 in February 1992 before falling to 65,200 in May 1995. Since May 1995 the number of wage and salary earners in the private sector has fluctuated over a small range, rising to 66,600 in November 1996 and peaking at 71,600 in February 1997. Nationally, there has been a gradual increase in the number of wage and salary earners in the private sector, peaking at 5,306,000 in November 1996 before falling 0.1% to 5,301,500 in February 1997.

WAGE AND SALARY EARNERS, BY PRIVATE AND PUBLIC SECTOR — ACT



Of the 68,400 public sector wage and salary earners in the ACT at February 1997, 50,900 (74.4%) worked for the Commonwealth Government while the remaining 17,500 (25.6%) were employed mainly with the ACT Government. The trend number of ACT wage and salary earners in the Commonwealth and State/Territory Governments have fallen 7.8% and 12.5% respectively since February 1996. Nationally, there was a decrease of 17.9% for wage and salary earners in the Commonwealth Government, 1.1% in the State/Territory Government and 4.9% in Local Government.

In February 1997, Government administration and defence (36,100 or 25.9%) accounted for the largest proportion of wage and salary earners (original) by industry type in the ACT. This was followed by Retail trade (18,400 or 13.2%), Education (14,200 or 10.2%), Property and business services (14,100 or 10.1%) and Health and community services (11,900 or 8.5%). Since February 1996, Government administration and defence (down 2,700 or 7.0%), Property and business services (down 1,800 or 11.3%) Education (down 600 or 4.1%) and Health and community services (down 4,00 or 3.3%) experienced the largest declines in the number of the total wage and salary earners, while Retail trade (up 3,800 or 26.0%), Personal and other services (up 2,900 or 40.8%) and Accommodation, cafes and restaurants (up 2,100 or 42.9%) experienced the largest increases.

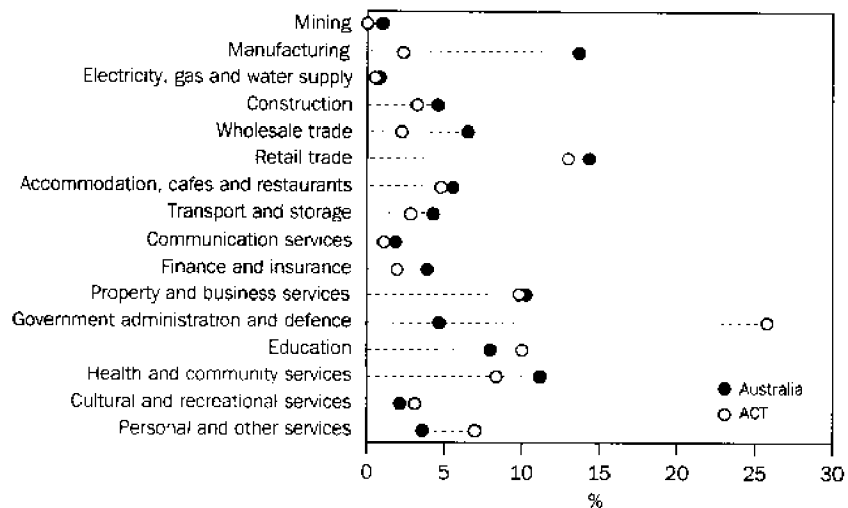
Nationally, Retail trade (14.6%) accounted for the largest proportion of wage and salary earners by industry type, followed by Manufacturing (13.9%), Health and community services (11.3%), Property and business services (10.5%) and Education (8.2%). Since February 1996, Retail trade (up 60,700 or 6.5%), Health and community services (up 22,700 or 3.1%), Property and business services (up 10,000 or 1.4%) and Education

(up 5,200 or 0.9%) experienced the largest increases in the number of total wage and salary earners by industry, while Finance and Insurance (down 28,400 or 9.3%), Transport and Storage (down 27,000 or 8.3%) and Manufacturing (down 10,000 or 1.0%) experienced the largest declines.

Over the three months from November 1996 the number of ACT wage and salary earners (original) in the private sector employed by organisations with less than 20 employees rose from 29,700 to 31,300, an increase of 5.4%. The employment levels in the 20-99 employees range increased from 15,200 to 20,000 (up 31.6%), while the 100 plus employee category fell from 21,400 to 20,800 (down 2.8%). Nationally, organisations with less than 20 employees increased 3.6%, while employment levels in the 20-99 and 100 plus range fell 0.7% and 5.1% respectively.

In March 1997, gross earnings (original) for wage and salary earners in the ACT was \$1.180 million, a fall of \$133 million (down 10.1%) since December 1996, but was up \$24.3 million (2.1%) since March 1996. The fall from December 1996 was a result of a 17.3% decrease in gross earnings in the public sector, from \$901.2 million in December 1996 to \$745.7 million in March 1997. Gross earnings in the private sector increased 5.6% from \$411.6 million in December 1996 to \$434.5 million in March 1997. Over the same period national gross earnings declined 6.4% over the quarter, and 0.8% since March 1996

PROPORTION OF WAGE AND SALARY EARNERS, INDUSTRY — February 1997



1**BUSINESS EXPECTATIONS: SALES, DECEMBER QUARTER
1997/DECEMBER QUARTER 1998, EXPECTED AGGREGATE CHANGE**

<i>Period</i>	<i>ACT</i>	<i>Aust.</i>
	<i>%</i>	<i>%</i>
Short-term		
Mar qtr 1996-Jun qtr 1996	1.8	2.3
Jun qtr 1996-Sep qtr 1996	0.4	1.6
Sep qtr 1996-Dec qtr 1996	-0.3	1.6
Dec qtr 1996-Mar qtr 1997	-1.1	0.4
Mar qtr 1997-Jun qtr 1997	1.3	1.6
Jun qtr 1997-Sep qtr 1997	-1.7	0.7
Sep qtr 1997-Dec qtr 1997	0.5	3.0
Medium-term		
Mar qtr 1996-Mar qtr 1997	2.3	4.1
Jun qtr 1996-Jun qtr 1997	1.4	3.6
Sep qtr 1996-Sep qtr 1997	1.5	3.1
Dec qtr 1996-Dec qtr 1997	2.2	3.1
Mar qtr 1997-Mar qtr 1998	1.7	2.9
Jun qtr 1997-Jun qtr 1998	2.0	2.4
Dec qtr 1997-Dec qtr 1998	1.2	3.9

Indicator	Unit	ACT			Aust.		
		% change from			% change from		
		Latest figure	Previous period	Same period previous year	Latest figure	Previous period	Same period previous year
POPULATION, VITAL AND LABOUR							
POPULATION Mar qtr 97	'000	310.1	0.5	1.0	18 492.0	0.4	1.3
Natural increase	no.	728	-6.8	-1.6	33 855	8.9	-2.5
Net migration	no.	866	—	—	31 243	—	—
Total increase	no.	1 594	—	—	65 098	—	—
Original series							
Employed	'000	158.3	1.3	1.3	8 526.4	2.5	1.1
Unemployed	'000	13.6	1.5	3.8	793.0	3.7	-0.9
Unemployment rate(a)	%	7.9	—	0.1	8.5	0.1	-0.2
Participation rate(a)	%	73.2	0.9	0.6	63.8	1.6	-0.3
Long-term unemployed (Aug 97)	no.	2 753	-1.0	-11.1	235 318	-0.3	7.3
Long-term unemployed as percentage total unemployed (Aug 97)(a)	—	20.5	-4.5	-1.1	30.8	-0.6	2.4
Trend series							
Employed	'000	157.3	-0.3	2.5	8 415.4	0.1	0.5
Unemployed	'000	14.0	2.9	-2.8	793.3	-0.1	—
Unemployment rate(a)	%	8.2	0.3	-0.4	8.6	—	-0.1
Participation rate(a)	%	73.0	—	1.1	63.0	-0.1	-0.6
WAGE AND SALARY EARNERS, Feb 97							
Trend series							
Public Sector	'000	68.4	-2.1	-9.2	1 480.6	-0.7	-5.3
Private Sector	'000	71.6	7.5	6.4	5 301.5	-0.1	2.6
Total Public and Private	'000	140.0	2.6	-1.8	6 782.2	-0.2	0.7
JOB VACANCIES, Aug 97	'000	1.0	—	11.1	69.3	19.3	9.1
INDUSTRIAL DISPUTES IN PROGRESS, Jun 97							
Working days lost	'000	0.3	-72.7	-92.5	29.6	-59.5	78.0
Days lost per '000 employees (year ended Jun 97)	no.	95.0	-22.1	39.7	89.0	-14.4	-22.6
BUILDING AND CONSTRUCTION							
HOUSING FINANCE, Aug 97							
Secured commitments to individuals for							
Original series							
Construction of dwellings	\$m	9.2	46.0	39.4	670.5	-3.1	30.9
Purchase of new dwellings	\$m	5.1	-10.5	-27.1	249.5	-3.1	26.2
Purchase of established dwellings	\$m	50.5	1.0	24.4	2 681.2	-4.4	17.1
Refinancing	\$m	23.4	12.5	-39.8	858.3	-0.2	-21.1
Total housing commitments	\$m	76.0	—	-10.0	4 459.5	-3.3	10.0
Seasonally adjusted series							
Total housing commitments	\$m	81.5	15.9	-3.4	4 548.4	6.5	13.1
Trend series							
Dwelling units financed	no.	683	1.6	-19.4	39 949	0.1	1.2
Total housing commitments	\$m	72.6	2.0	13.6	4 412.0	1.0	12.7
BUILDING APPROVALS, Aug 97							
Original series							
Dwelling units	no.	153	43.0	-55.7	13 279	3.8	16.6
Value of new residential	\$m	16.1	51.9	-44.3	1 452.3	10.3	28.7
Value of residential alterations and additions	\$m	4.0	11.1	-24.5	230.5	1.2	11.9
Value of non-residential	\$m	18.3	-33.5	26.2	1 368.4	-16.6	20.5
Value of total building	\$m	38.4	-8.1	-21.1	3 051.1	-4.3	23.5
Trend series							
Dwelling units	no.	95	-7.8	-44.4	12 071	0.7	13.7

(a) State estimates are not comparable to national estimates from the June quarter 1995 due to revised methodology used in *Australian National Accounts, State Accounts* (Cat. no. 5242.0).

Indicator	Unit	ACT			Aust.		
		Latest figure	% change from		Latest figure	% change from	
			Previous period	Same period previous year		Previous period	Same period previous year
BUILDING AND CONSTRUCTION <i>continued</i>							
BUILDING COMMENCEMENTS, Mar qtr 97							
New houses	no.	276	-4.8	27.2	19 532	-10.6	2.3
Value of houses commenced	\$m	30.4	-6.5	24.1	2 140.0	-10.4	6.4
Value of non-residential building commenced	\$m	112.5	0.6	72.3	2 832.7	-14.0	-6.1
Value of total commencements	\$m	168.0	-2.1	45.3	6 474.4	-10.7	-1.4
PRICE INDEXES							
Established house price index, Jun qtr 97	(a)	127.3	2.4	-0.1	116.8	1.3	2.8
ENGINEERING CONSTRUCTION (Mar qtr 97)							
Private sector							
Value of work commenced	\$m	8.5	-35.1	-34.1	1 948.9	11.1	-40.3
Value of work done	\$m	13.3	22.0	-5.7	2 005.9	14.7	7.7
Value of work yet to be done	\$m	28.1	-13.3	1.1	5 529.0	-0.3	9.8
Value of work done by public sector	\$m	16.4	-21.5	4.5	1 312.7	-13.1	-17.1
PRICES, WAGES AND CONSUMER SPENDING							
CONSUMER PRICE INDEX, June qtr 97							
Food	(a)	122.5	0.4	2.4	120.8	0.5	3.2
Housing	(a)	98.7	-4.5	-12.3	96.9	-3.3	-8.8
Transportation	(a)	130.7	-0.9	0.6	123.9	-1.0	0.1
All groups	(a)	120.4	-0.8	-0.8	120.2	-0.2	0.3
AVERAGE WEEKLY EARNINGS, May 97							
Original series							
Males	\$	763.2	-1.8	2.8	686.3	-0.3	2.2
Females	\$	563.8	-2.2	4.2	457.4	-0.1	3.7
Persons	\$	664.3	-2.2	3.6	577.5	-0.7	2.3
Trend series							
Males	\$	767.3	-0.4	1.8	688.6	0.6	2.6
Females	\$	566.1	-0.1	5.5	457.4	0.8	3.7
Persons	\$	670.5	0.3	4.4	579.1	0.5	2.6
RETAIL TURNOVER, Aug 97							
Original series							
Food retailing	\$m	78.5	1.6	-6.5	4 408.8	0.0	2.2
Department stores	\$m	19.2	-25.0	-7.7	836.2	-13.9	-5.9
Hospitality and services	\$m	35.0	2.9	9.0	1 853.8	2.2	3.9
All other retailing	\$m	73.5	-4.2	18.7	3 628.4	-2.0	3.1
Total	\$m	206.2	3.5	3.7	10 727.2	-1.5	2.1
Trend series							
Food retailing	'000	78.5	0.9	-4.8	4 446.6	0.4	4.2
Department stores	\$m	24.0	1.7	0.8	976.1	0.7	1.0
Hospitality and services	\$m	33.5	2.4	6.7	1 878.1	0.8	4.6
All other retailing	%	79.9	2.4	23.5	3 786.4	0.6	5.0
Total	'000	215.9	1.8	6.7	11 087.2	0.6	4.3

(a) Base year: 1989-90=100.0.

(b) State estimates are not comparable to national estimates from the June quarter 1995 due to revised methodology used in *Australian National Accounts, State Accounts* (Cat. no. 5242.0).

Indicator	Unit	ACT			Aust.			
		Latest figure	Previous period	% change from		Latest figure	Previous period	% change from
				Same period previous year	Latest figure			Previous period
TOURISM AND TRANSPORT								
HOTELS, MOTELS AND GUEST HOUSE ACCOMMODATION, Mar qtr 97								
Original series								
Room nights	'000	203.4	-8.0	2.6	9 193.5	-3.7	0.6	
Takings at current prices	\$m	19.2	-7.2	6.7	923.4	-2.4	5.7	
Takings at 1989-90 prices	\$m	15.8	-7.6	6.0	765.1	-2.6	4.3	
Room occupancy rate (Jun qtr 97)(a)	%	54.5	-3.5	-9.0	54.6	-1.3	-0.4	
Seasonally adjusted series								
Room nights	'000	210.3	-1.0	3.9	9 288.2	-0.3	1.3	
Takings at current prices	\$m	19.8	-1.5	8.8	923.8	1.3	6.2	
Takings at 1989-90 prices	\$m	16.3	-1.8	7.9	765.3	1.1	4.8	
Trend series								
Room nights	'000	209.1	0.2	0.8	9 301.8	0.7	1.8	
Takings at current prices	\$m	19.7	0.5	4.8	922.0	1.8	6.4	
Takings at 1989-90 prices	\$m	16.3	0.6	4.5	763.2	1.5	5.0	
NEW MOTOR VEHICLE REGISTRATIONS, Aug 97								
Motor vehicles	no.	1 222	-4.5	10.7	57 563	-7.3	5.9	
Seasonally adjusted motor vehicles	no.	1 138	-5.5	10.8	59 078	2.5	9.2	
Trend motor vehicles	no.	1 208	2.0	32.5	59 041	0.3	10.9	
AGGREGATE INDICATORS								
STATE ACCOUNTS, Jun qtr 97(a)								
Original series								
Gross State product at av. 1989-90 prices	\$m	2 177	6.4	-1.9	110 954	3.9	3.1	
Gross State product at current prices	\$m	2 643	5.4	-1.6	128 419	4.5	5.0	
State final demand at av. 1989-90 prices	\$m	2 974	12.5	-2.1	114 867	9.7	4.0	
Private final consumption expenditure	\$m	1 460	7.0	3.2	79 087	4.3	3.7	
Private gross fixed capital expenditure	\$m	203	19.4	-0.5	23 805	27.7	11.5	
Trend series								
Gross State product at av. 1989-90 prices	\$m	2 151	0.4	-1.0	112 600	0.6	2.6	
Gross State product at current prices	\$m	2 617	-0.5	-0.5	129 868	1.2	4.7	
State final demand at av. 1989-90 prices	\$m	2 862	1.3	2.0	112 337	1.2	3.8	
Private final consumption expenditure	\$m	1 467	0.8	4.0	79 822	1.0	3.8	
Private gross fixed capital expenditure	\$m	197	0.0	-2.5	21 191	1.4	4.8	

(a) State estimates are not comparable to national estimates from the June quarter 1995 due to revised methodology used in *Australian National Accounts, State Accounts* (Cat. no. 5242.0).

Source: ABS Catalogue nos: 3101.0, 5242.0, 5609.0, 6202.0, 6203.0, 6302.0, 6321.0, 6354.0, 6401.0, 6408.0, 6416.0, 8501.0, 8634.0, 8635.8, 8731.0, 8752.0, 9214.0, 9301.0.

Indicator	Unit	Latest period	NSW	Vic.	Qld	SA	WA	Tas.	NT	ACT	Aust.
POPULATION	'000	Mar qtr 97	6 260.9	4 595.7	3 392.9	1 478.7	1 791.2	473.8	185.7	310.1	18 492.0
LABOUR FORCE											
Employed persons (trend)	'000	Sep 97	2 792.8	2 089.8	1 572.6	661.9	864.4	191.6	84.1	157.3	8 415.4
Unemployment rate (trend)	%	Sep 97	8.0	9.1	9.4	9.8	7.1	11.3	5.4	8.2	8.6
WAGE AND SALARY EARNERS											
Public Sector (trend)	'000	Feb 97	480.3	319.2	281.3	118.2	147.2	43.6	22.3	68.4	1 480.6
Private Sector (trend)	'000	Feb 97	1 872.9	1 409.1	863.5	381.6	530.3	121.3	51.1	71.6	5 301.5
Total Public and Private Sector (trend)	'000	Feb 97	2 353.3	1 728.3	1 144.8	499.8	677.5	165.0	73.4	140.0	6 782.2
STATE ACCOUNTS(a)											
Gross State product at 1989-90 prices (trend)	\$m	Jun qtr 97	38 126	29 612	18 689	7 662	12 703	2 172	1 253	2 151	112 600
Gross State product at current prices (trend)	\$m	Jun qtr 97	45 455	33 534	21 007	9 116	13 890	2 641	1 373	2 617	129 868
BUILDING APPROVALS											
Dwelling units approved	no.	Aug 97	4 559	3 222	3 122	568	1 373	136	146	153	13 279
Dwelling units approved (trend)	no.	Aug 97	4 293	2 809	2 792	556	1 403	145	171	95	12 071
Value of non-residential building approved	\$m	Aug 97	710.5	183.9	293.6	63.8	81.4	6.4	10.5	18.3	1 368.4
Value of all buildings approved	\$m	Aug 97	1 405.9	574.0	625.1	123.2	232.1	20.9	31.4	38.4	3 051.1
ENGINEERING CONSTRUCTION											
Value of engineering construction work done	\$m	Mar qtr 97	1 068.8	604.3	729.3	187.6	608.9	62.3	27.8	29.8	3 318.7
AVERAGE WEEKLY EARNINGS											
Full-time adult ordinary time (trend)	\$	May 97	721.4	693.4	661.3	656.2	694.0	667.4	705.2	790.6	696.7
RETAIL TRADE											
Retail turnover (trend)	\$m	Aug 97	3 958.9	2 566.2	2 027.3	814.4	1 119.3	266.6	116.7	215.9	11 087.2
HOTELS, MOTELS AND GUEST HOUSE ACCOMMODATION											
Room nights occupied (trend)	'000	Mar qtr 97	3 145.1	1 519.6	2 469.4	535.7	843.4	260.8	318.5	209.1	9 301.8
Room occupancy rate (original)	%	Jun qtr 97	56.0	53.3	56.4	51.1	53.8	43.7	52.7	54.5	54.6
NEW MOTOR VEHICLE REGISTRATIONS											
Trend	no.	Aug 97	19 768	14 430	11 563	3 852	6 271	1 318	633	1 208	59 041
	Unit	Latest period	Syd.	Melb.	Bris.	Adel.	Perth	Hob.	Dar.	Canb.	Aust.
CONSUMER PRICE INDEX											
Food	(b)	Jun qtr 97	121.5	119.6	119.9	121.9	121.9	121.0	122.0	122.5	120.8
Housing	(b)	Jun qtr 97	101.8	90.1	103.0	94.1	91.8	98.4	114.6	98.7	96.9
Transportation	(b)	Jun qtr 97	124.6	123.8	123.7	122.7	122.2	121.7	122.4	130.7	123.9
All Groups	(b)	Jun qtr 97	120.2	119.9	121.1	121.9	118.1	121.3	121.5	120.4	120.2
Average retail prices (cents)											
Milk, carton, supermarket sales	1 litre	Jun qtr 97	115	130	116	122	130	125	117	112	n.a.
Bread, white loaf, sliced, supermarket sales	680 g	Jun qtr 97	201	192	197	160	178	171	194	193	n.a.
Beef, rump steak	1 kg	Jun qtr 97	1205	1033	1084	1141	1076	958	1189	1043	n.a.
Chicken, frozen	1 kg	Jun qtr 97	352	387	329	370	353	402	433	377	n.a.
Potatoes	1 kg	Jun qtr 97	121	130	116	108	112	77	130	114	n.a.
Coffee, instant (jar)	150 g	Jun qtr 97	606	554	597	539	577	628	592	638	n.a.
Scotch nip, public bar	30 ml	Jun qtr 97	318	286	254	345	350	249	319	291	n.a.
Private motoring petrol											
Leaded	1 litre	Jun qtr 97	75.9	73.5	67.1	75.4	77	80	82.5	79.6	n.a.
Unleaded	1 litre	Jun qtr 97	73.7	71.4	64.9	73	74.8	77.9	80.5	77.4	n.a.

(a) State estimates are not comparable to national estimates from the June quarter 1995 due to revised methodology used in *Australian National Accounts, State Accounts* (Cat. no. 5242.0).

(b) Base year: 1989-90=100.0.

ACT IN RELATION TO THE REST OF AUSTRALIA — PERCENTAGE CHANGES

Indicator	Latest period	NSW	Vic.	Qld	SA	WA	Tas.	NT	ACT	Aust.
POPULATION	Mar qtr 97	0.3	0.3	0.6	0.1	0.5	-0.1	0.4	0.5	0.4
LABOUR FORCE										
Employed persons (trend)	Sep 97	—	—	0.2	—	0.5	-0.1	-0.6	-0.3	0.1
Unemployment rate (trend)	Sep 97	—	-0.1	—	—	—	0.1	0.2	0.3	—
WAGE AND SALARY EARNERS										
Public Sector (trend)	Feb 97	-1.0	-1.0	0.6	-1.3	0.2	-2.5	—	-2.1	-0.7
Private Sector (trend)	Feb 97	0.6	-0.8	-1.8	-1.2	1.8	1.3	1.6	7.5	-0.1
Total Public and Private Sector (trend)	Feb 97	0.3	-0.8	-1.3	-1.3	1.5	0.2	1.1	2.6	-0.2
STATE ACCOUNTS(a)										
Gross State product at 1989-90 prices (trend)	Jun qtr 97	0.3	1.3	0.9	-0.5	—	-0.8	0.8	0.4	0.6
Gross State product at current prices (trend)	Jun qtr 97	1.4	1.0	0.9	0.7	1.2	-0.2	1.0	-0.5	1.2
BUILDING APPROVALS										
Dwelling units approved	Aug 97	8.8	21.0	-7.2	-10.4	-10.3	-17.6	6.6	43.0	3.8
Dwelling units approved (trend)	Aug 97	2.3	3.1	0.4	-3.1	0.4	-1.4	-4.5	7.8	0.7
Value of non-residential building approved	Aug 97	21.5	-19.4	-45.1	-49.0	-22.7	-17.9	-66.8	-33.5	-16.8
Value of all buildings approved	Aug 97	21.5	0.2	-29.6	-34.1	-13.6	-19.0	-36.3	-8.1	-4.3
ENGINEERING CONSTRUCTION										
Value of engineering construction work done	Mar qtr 97	-14.5	-3.9	-20.5	1.0	-16.8	6.9	-51.7	-6.3	-14.1
AVERAGE WEEKLY EARNINGS										
Full-time adult ordinary time (trend)	May 97	0.3	1.1	1.3	1.2	0.4	1.5	1.1	-0.3	0.7
RETAIL TRADE										
Retail turnover (trend)	Aug 97	0.6	0.3	0.6	0.7	0.3	0.5	0.7	1.8	0.6
HOTELS, MOTELS AND GUEST HOUSE ACCOMMODATION										
Room nights occupied (trend)	Mar qtr 97	0.4	0.8	0.8	1.9	0.3	—	3.4	0.2	0.7
Room occupancy rate (original)	Jun qtr 97	4.9	-6.5	-0.9	-4.3	-3.3	-19.2	6.3	-3.5	-4.0
NEW MOTOR VEHICLE REGISTRATIONS										
Trend	Aug 97	-0.6	1.0	0.6	—	0.8	1.8	-2.9	2.0	0.3
	Latest period	Syd.	Melb.	Bris.	Adel.	Perth	Hob.	Dar.	Canb.	Aust.
CONSUMER PRICE INDEX										
Food	Jun qtr 97	0.3	0.7	0.1	0.6	0.6	0.2	1.4	0.4	0.5
Housing	Jun qtr 97	-3.0	-3.6	-3.2	-3.5	-3.2	-3.4	-2.7	-4.5	-3.3
Transportation	Jun qtr 97	-1.0	-1.0	-0.6	-2.3	-0.6	-0.9	-0.2	-0.9	-1.0
All Groups	Jun qtr 97	-0.3	-0.2	-0.3	-0.6	-0.1	-0.5	-0.1	-0.8	-0.2
Average retail prices (cents)										
Milk, carton, supermarket sales	Jun qtr 97	—	—	—	5.2	2.4	—	—	0.0	n.a.
Bread, white loaf, sliced, supermarket sales	Jun qtr 97	—	-0.5	1.5	4.6	0.6	-2.3	—	0.0	n.a.
Beef, rump steak	Jun qtr 97	0.2	-4.3	2.9	-1.4	-1.6	-8.8	-6.5	-2.6	n.a.
Chicken, frozen	Jun qtr 97	-2.5	2.1	-4.1	5.4	-1.1	2.3	4.1	4.1	n.a.
Potatoes	Jun qtr 97	15.2	13.0	24.7	38.5	-5.9	-13.5	16.1	16.3	n.a.
Coffee, instant (jar)	Jun qtr 97	9.8	3.9	9.3	7.8	2.9	9.6	10.0	14.1	n.a.
Scotch nip, public bar	Jun qtr 97	—	0.4	0.8	—	2.9	0.8	1.3	1.4	n.a.
Private motoring petrol										
Leaded	Jun qtr 97	-1.6	-2.3	1.6	-2.7	-0.5	—	0.6	-0.9	n.a.
Unleaded	Jun qtr 97	-1.6	-2.2	-1.7	-2.9	-0.5	—	0.6	-0.9	n.a.

(a) State estimates are not comparable to national estimates from the June quarter 1995 due to revised methodology used in *Australian National Accounts, State Accounts* (Cat. no. 5242.0).

For more information . . .

The ABS publishes a wide range of statistics and other information on Australia's economic and social conditions. Details of what is available in various publications and other products can be found in the ABS Catalogue of Publications and Products available from all ABS Offices.

ABS Products and Services

Many standard products are available from ABS bookshops located in each State and Territory. In addition to these products, information tailored to the needs of clients can be obtained on a wide range of media by contacting your nearest ABS Office. The ABS also provides a Subscription Service for standard products and some tailored information services.

National Dial-a-Statistic Line

0055 86 400

Steadycom P/L: premium rate 25c/20 secs.

This number gives 24-hour access, 365 days a year, for a range of important economic statistics including the CPI.

Internet

<http://www.abs.gov.au>

A wide range of ABS information is available via the Internet, with basic statistics available for each State, Territory and Australia. We also have Key National Indicators, ABS product release details and other information of general interest.

Sales and Inquiries

client.services@abs.gov.au

National Mail Order Service	(02) 6252 5249
Subscription Service	1300 366 323

	Information Inquiries	Bookshop Sales
CANBERRA	(02) 6252 6627	(02) 6207 0326
SYDNEY	(02) 9268 4611	(02) 9268 4620
MELBOURNE	(03) 9615 7755	(03) 9615 7755
BRISBANE	(07) 3222 6351	(07) 3222 6350
PERTH	(08) 9360 5140	(08) 9360 5307
ADELAIDE	(08) 8237 7100	(08) 8237 7582
HOBART	(03) 6222 5800	(03) 6222 5800
DARWIN	(08) 8943 2111	(08) 8943 2111



Client Services, ABS, PO Box 10, Belconnen ACT 2616

Produced by the Australian Bureau of Statistics
© Commonwealth of Australia 1997

Recommended retail price: \$15.50



2130380010974
ISSN 1320-808X